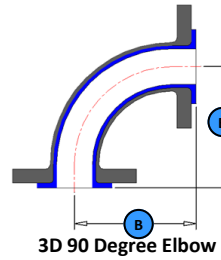
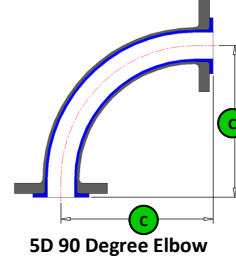


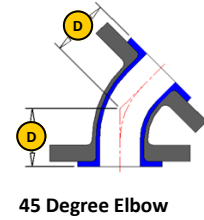
90 Degree Elbow



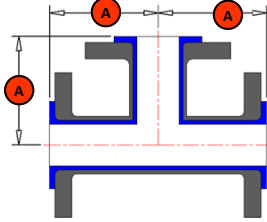
3D 90 Degree Elbow



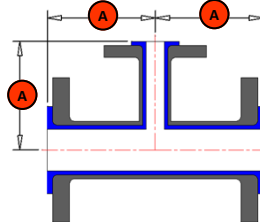
5D 90 Degree Elbow



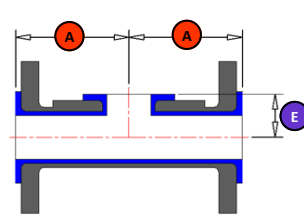
45 Degree Elbow



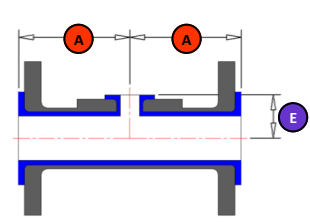
Equal Tee



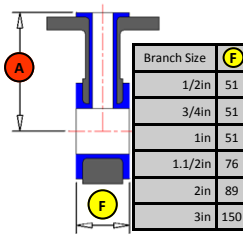
Reducing Tee



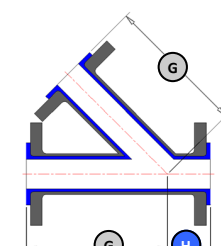
Short Stack Equal Tee



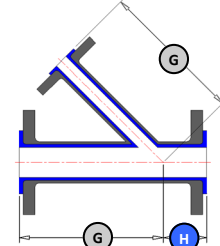
Short Stack Reducing Tee



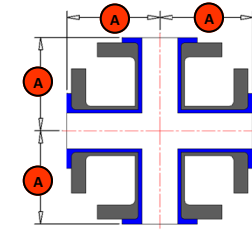
Instrument Tee



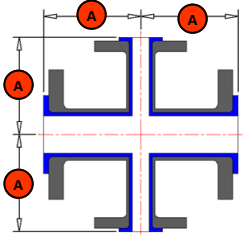
Equal Lateral Tee



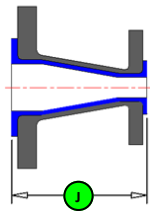
Reducing Lateral Tee



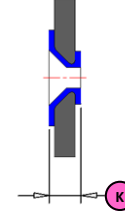
Equal Cross



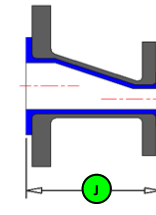
Reducing Cross



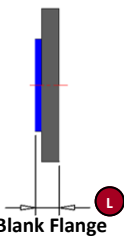
Concentric Reducer



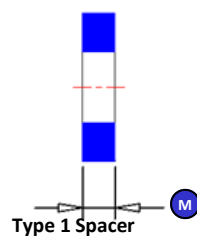
Reducing Flange



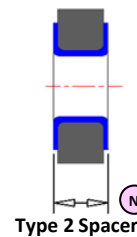
Eccentric Reducer



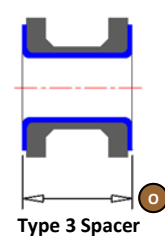
Blank Flange



Type 1 Spacer



Type 2 Spacer



Type 3 Spacer

Nominal Bore	DN	A	B	C	D	E	G	H	J	K	L	M Max.	N Max.	O Max.	Van Stone Spool Min.	Fixed/Rotating-Welded Spool Min.	Spool Max.
1/2 in	DN 15	65*									14	29	60	100	250	75	6000
3/4 in	DN 20	75								30	15	29	60	100	250	80	6000
1 in	DN 25	89	76	127	44	30	146	44		30	17	29	60	100	250	86	6000
1 1/2 in	DN 40	102	114	191	57	37	178	51	114	30	20	29	60	100	250	93	6000
2 in	DN 50	114	152	254	63	43	203	64	127	30	21	29	70	100	250	106	6000
3 in	DN 80	140	229	381	76	56	254	76	152	35	26	29	70	150	250	120	6000
4 in	DN 100	165	305	508	102	67	305	76	178	35	26	29	70	150	250	125	6000
6 in	DN 150	203	457	762	127	105	368	89	229	40	28	29	80	150	500	140	6000
8 in	DN 200	229	610	1016	140	125	444	114	279	40	31	29	80	200	500	150	3000
10 in	DN 250	279	762	1270	165	152	521	127	305	35	33	29	80	200		165	3000
12 in	DN 300	305	914	1524	190	179	622	140	356	40	34	29	80	200		170	3000

*Please note that 1/2in 90 Degree Elbow is 100mm. The Face to face Dimension of reducing fittings is normally defined by the nominal bore of the larger size. Special dimensions are available on request. For further information go to our website at www.crp.co.uk or call MultiFlow on 061 326 844